



SAILING INSTRUCTIONS
2019 Round 2 Fast 40+ Class Race Circuit
Friday 14th – Sunday 16th June 2019
Poole, United Kingdom

Organising Authority (OA)

Royal Motor Yacht Club (RMYC) and in conjunction with Fast40+ Class.

The notation '[DP]' in a rule in the Sailing Instructions means that the penalty for a breach of that rule may, at the discretion of the Protest Committee, be less than disqualification.

1 RULES

- 1.1 The Event will be governed by the rules as defined in "The Racing Rules of Sailing" (RRS) 2017 – 2020.
- 1.2 **[DP]** The Fast 40+ Class rule will apply.
- 1.3 **[DP]** Boats shall comply with World Sailing Offshore Special Regulations Category 4 Monohulls, including a working VHF radio.
- 1.4 **[DP]** The National authority (RYA) prescriptions will apply.
<http://www.rya.org.uk/SiteCollectionDocuments/Racing/RacingInformation/RacingRules/RYA%20Prescriptions%202017.pdf>

2 NOTICES TO COMPETITORS AND COMMUNICATIONS

- 2.1 Notices to competitors will be posted on the Official Notice Board (ONB) situated in the reception area of the Royal Motor Yacht Club.
- 2.2 The VHF call sign for the Race Committee (RC) will be "Fast 40 Race Committee". VHF channel 77 will be used to communicate with Competitors.
- 2.3 In addition to VHF radio, the Fast 40+ Class WhatsApp group will also be used to provide notifications and RC intentions. Sign up details will be provided at registration. Failure to receive WhatsApp messages shall not be grounds for redress and changes RRS 62.1(a).
- 2.4 Except in an emergency, a boat that is racing shall not make voice or data transmissions and shall not receive voice or data communications that are not available to all boats. [DP]

3 SAFETY

- 3.1 Competitors should monitor Channel 14 when transiting the Poole harbour. Attention is drawn to "INTERNATIONAL REGULATIONS FOR PREVENTING COLLISIONS AT SEA", Rule 9(b), which states "A vessel of less than 20 metres in length or a sailing vessel shall not impede the passage of a vessel which can safely navigate only within a narrow channel or fairway". The RC or Protest Committee may protest a boat for breach of the International Regulations for Preventing Collisions at Sea (IRPCAS) or the above regulations on the basis of a report from any source. This changes RRS 60.2(a) and 60.3(a). [DP]
- 3.2 A boat that retires from a race shall notify the RC by VHF before leaving the race area, or by telephoning +44 07525 159140. [DP]

4 CHANGES TO SAILING INSTRUCTIONS

- 4.1 Any change to the sailing instructions will be posted on the ONB by 08:30hrs on the day it will take effect.
- 4.2 Any change to the time of the first warning signal each day will be posted not later than 19:00hrs on the day before it will take effect.

5 SIGNALS MADE ASHORE

- 5.1 No signals ashore will be displayed. The RC will inform competitors VHF and the WhatsApp group.



6 SCHEDULE OF RACES AND CLASS FLAG

<u>Date</u>	<u>1st warning signal</u>		<u>HW Poole</u>
Friday 14 th June	1130hrs	Races	08:00 1.9m high
Saturday 15 th June	1100hrs	Races	08:44 1.9m high
Sunday 16 th June	1030hrs	Races	09:24 2.0m high

- 6.1 It is intended to complete up to eight (8) races.
- 6.2 There will be no more than three races a day, however, additional races may be sailed on any day to complete the programme if weather or other reasons dictate.
- 6.3 No warning signal will be displayed after 14:30hrs on Sunday 16th June.
- 6.4 The class flag will be a white flag with the Fast 40+ class logo.

7 RACING AREA

- 7.1 Racing will be on the Poole Bay and adjacent waters. The RC will advise competitors of the intended start location via VHF 90 minutes prior to the first warning signal of each day.

8 COURSES

- 8.1 For windward leeward races the course signal, compass bearing and distance to mark 1 for each race will be announced by VHF before the attention signal. Addendum A.
- 8.2 For round the buoys races the course will be advised by VHF before the attention signal using the marks list. Addendum B.

9 MARKS

- 9.1 The description and colour of any laid inflatable mark that is to be used shall be provided by the RC, using VHF.
- 9.2 The starting marks will be a RC vessel and Orange inflatable mark.
- 9.3 The finishing marks will be the main RC vessel and either an orange inflatable mark or the nearby mark.

10 THE START

- 10.1 To alert boats that a start sequence will begin soon, the orange starting line flag will be displayed (with one sound) as an attention signal at least five minutes before the warning signal. The starting line shall be between the staff displaying an orange flag and the course side of the orange inflatable mark.
- 10.2 A boat starting later than 4 minutes after her starting signal will be scored Did Not Start (DNS) without a hearing. This changes rule A4 and A5.
- 10.3 In addition to RRS 29.1, individual recalls may be broadcast on VHF. Delay or failure to broadcast or receive a recalled bow number, sail number or boat name shall not be grounds for redress. This changes RRS 62.1(a).

11 CHANGE OF THE NEXT LEG OF THE COURSE

- 11.1 The position of any laid inflated mark(s) may be adjusted by up to approximately plus or minus 10 degrees relative to the previous laid mark(s) and/or up to approximately 200 metres to windward or leeward without a signal. This changes RRS 33.
- 11.2 For changes greater than those described in SI 11.1. To change the next leg of the course, the RC will move the original mark (or move the finishing line).
- 11.3 In addition to RRS 33 signals, the RC may use VHF radio to assist in communicating the change of the next leg of the course. Delay or failure to broadcast or receive broadcast shall not be grounds for redress. This changes RRS 62.1(a).



12 THE FINISH

- 12.1 The finishing line will be between a staff displaying a blue flag on the main RC vessel and either an orange inflatable mark orange or the nearby mark.

13 TIME LIMIT

- 13.1 The time limit for the first boat to sail a windward leeward course (Addendum A) and finish will be 90 minutes.
- 13.2 The time limit for the first boat to sail around the buoys course (Addendum B) and finish will be 180 minutes.
- 13.3 Windward leeward courses (addendum A) - boats failing to finish within 30 minutes after the first boat will be scored Did Not Finish (DNF). This changes RRS 35 and A5.
- 13.4 Around the buoys courses (addendum B) - boats failing to finish within 60 minutes after the first boat will be scored Did Not Finish (DNF). This changes RRS 35 and A5.

14 ON-THE-WATER JUDGING

- 14.1 Members of the protest committee (judges) may be afloat in Official Boats which will be identified by IC flag J. In an observed incident, where at least one party clearly indicates their intention to lodge a protest, the judges will display a signal and whistle sound.
- A Green/White flag signal means; 'the judges have seen an incident, and they believe that no rule has been broken'.
 - A Red flag signal means; 'the judges have seen an incident, and they believe that a rule has been broken'.
 - A yellow flag means; 'the judges did both see the incident and cannot determine whether they believe a boat may have broken a rule.'

15 PENALTIES

- 15.1 Rule 44.1 is changed so that the penalty for a boat breaking a rule in Part 2 shall be a One-Turn Penalty (1 tack and 1 gybe).
- 15.2 In addition to RRS 44.2: A boat may delay taking a penalty up to the next mark rounding whilst a spinnaker is hoisted. No part of a penalty may be taken inside the zone of a rounding mark that begins, bounds or ends the leg that the boat is on when the infringement occurred.
- 15.3 When the protest committee after finding the facts, decides that a boat that is a party to a protest hearing has broken the measurement rules, class or equipment rules, that boat will either be disqualified, will be given a discretionary penalty or will be warned that each subsequent infringement will lead to a penalty." This changes RRS 64.1. [DP]

16 PROTEST AND REQUEST FOR REDRESS

Boats intending to protest or request redress should radio their intention to the RC immediately on completion of the race concerned by VHF and await an acknowledgement. This adds to RRS 61.1(a) Protest forms are available at the RMYC Race Office. Protests and requests for redress or reopening shall be delivered there within the appropriate time limit. The protest time limit is 90 minutes after the last boat has finished the last race of the day.

- 16.1 Notices will be posted on the ONB within 20 minutes of the protest time limit to inform competitors of hearings in which they are parties or named as witnesses. The location and intended time of hearings will be provided.
- 16.2 Notices of protests by the RC, Technical Committee or Protest Committee (PC) will be posted on the ONB to inform boats under RRS 61.1(b).
- 16.3 On the last scheduled day of racing a request for redress from an PC decision shall be delivered no later than 30 minutes after the decision was posted. This changes RRS 62.2.

17 SCORING

The Low Point System of Appendix A will apply with the following changes:

- 17.1 The corrected time will be the elapsed time * IRC Time Correction Factor



- 17.2 One race shall be completed to constitute a series.
- 17.3 Up to eight (8) races are scheduled.
- 17.4 When six (6) to eight (8) races have been completed, a boat's series score will be the total of her race scores excluding her worst.

18 MEASUREMENT AND INSPECTIONS

- 18.1 A boat or equipment may be inspected at any time for compliance with Class Rules and Safety Requirements. On the water a boat can be instructed by the Technical Committee to proceed immediately to a designated area for inspection. [DP]

19 OFFICIAL BOATS

- 19.1 Official boats will be marked as follows:
 - 19.1.1 Race Committee – Yellow flag with RMYC in red letters.
 - 19.1.2 Protest Committee – IC flag J.

20 SUPPORT BOATS

- 20.1 All registered coach and support boats shall carry on board and operate while on the water a VHF radio capable of transmitting and receiving and agree to assist the Race Committee if directed to do so. [DP]

21 HAUL-OUT RESTRICTIONS

- 21.1 Boats shall be berthed afloat during the regatta from 16:00 on Thursday 13th June until the completion of the final race. Boats shall not be hauled out during this time, except with and per the terms of prior written permission of the race committee. [DP]

22 PRIZES

- 22.1 See NOR 16.

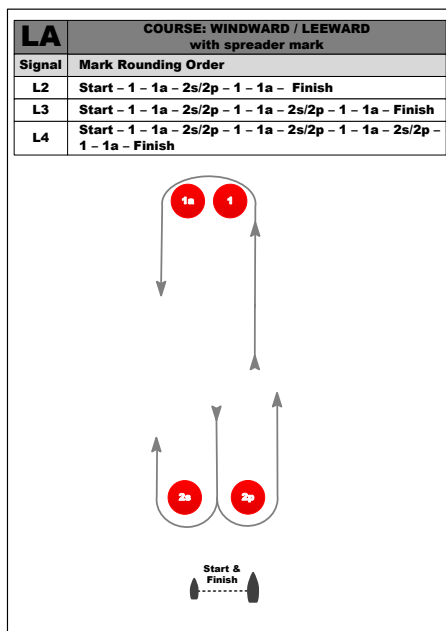
23 RISK STATEMENT

- 23.1 See NOR 21.

24 INSURANCE

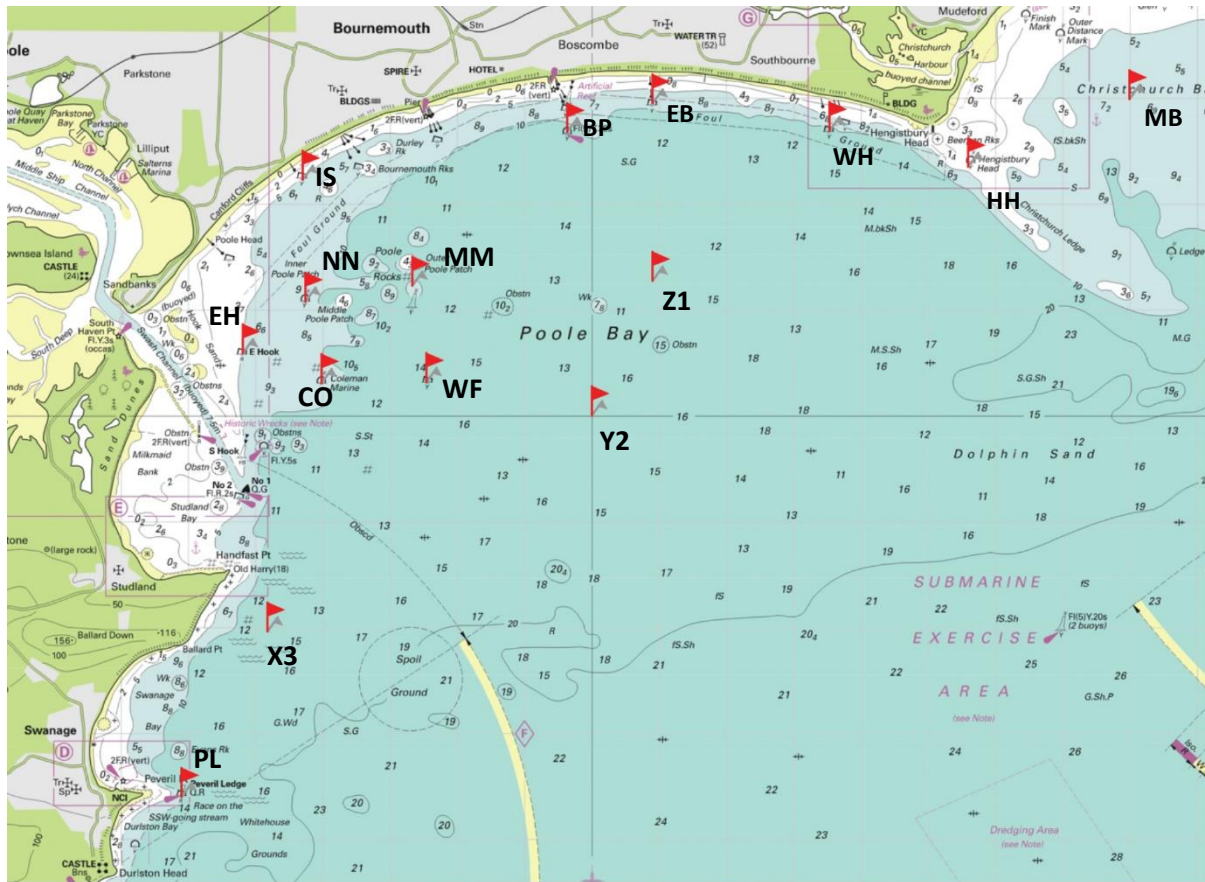
- 24.1 Each participating boat shall ensure that their boat is adequately insured against all third-party claims.

ADDENDUM A.





ADDENDUM B.



Mark List – approximate GPS positions:

MB	50° 42.99N	001° 42.01W	Yellow small
HH	50° 42.35N	001° 44.41W	Yellow small
WH	50° 42.69N	001° 46.47W	Yellow medium
EB	50° 42.95N	001° 49.10W	Yellow small
BP	50° 42.68N	001° 50.37W	Yellow small
IS	50° 42.23N	001° 54.30W	Yellow medium
MM	50° 41.23N	001° 52.67W	Yellow small
NN	50° 41.08N	001° 54.26W	Yellow small
WF	50° 40.32N	001° 52.46W	Yellow medium
CO	50° 40.31N	001° 54.02W	Yellow small
EH	50° 40.59N	001° 55.19W	Red medium
PL	50° 36.40N	001° 56.10W	Red medium
X3	50° 42.59N	001° 52.29W	<i>Laid mark colour to be advised</i>
Y2	50° 42.59N	001° 52.29W	<i>Laid mark colour to be advised</i>
Z1	50° 42.59N	001° 52.29W	<i>Laid mark colour to be advised</i>